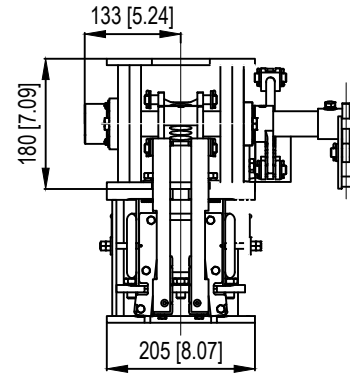
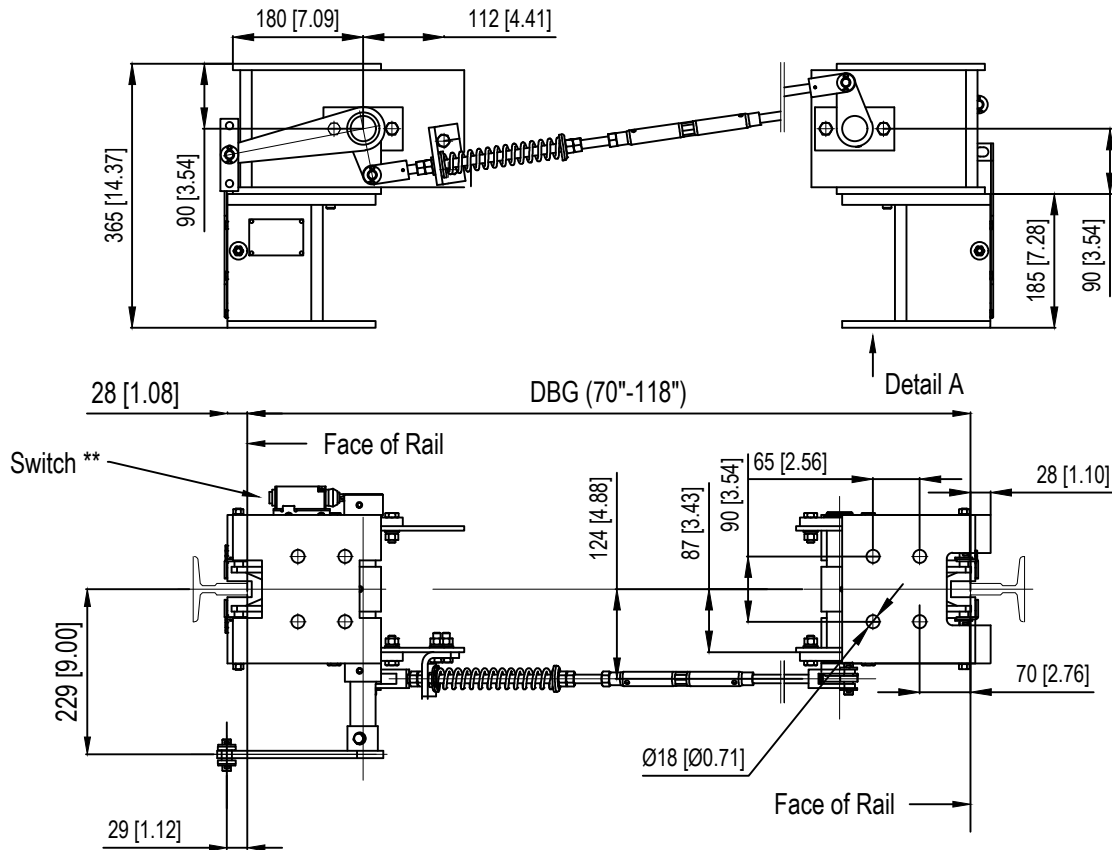
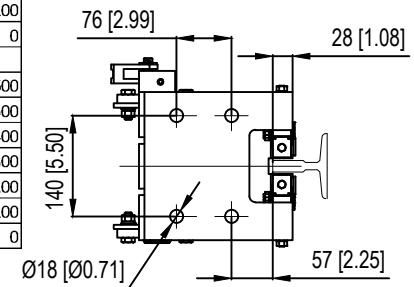


A		B			C		D			E
Part Number	Model	Max Speed (FPM)	Min P+Q* (lb)	Max P+Q* (lb)	Min/Max Activation Force (lbs)	Guide Rail (lbs/ft)	Weight (lbs/set)	Lubricated Rails	Gov. Location	
SAF10-070050-Q13	QJB2500	500	2640	7000	45/337	8#,12#,15#	178	No	Q1, Q3	
SAF10-099050-Q13	QJB2500	500	7000	10692	45/337	8#,12#,15#	178	No	Q1, Q3	



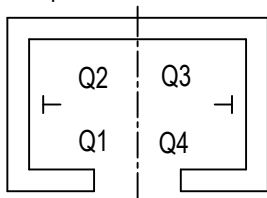
DBG (mm)	DBG (inches)	Pull rod length	Cut off length
1778-1830	70"-72.05"	964	500
1831-1930	72.06"-76"	1064	400
1931-2030	76.01"-79.95"	1164	300
2031-2130	79.96"-83.86"	1264	200
2131-2230	83.9"-87.8"	1364	100
2231-2286	87.83"-90"	1464	0
DBG 90.1"-118"			
2331-2430	91"-95.66"	1564	600
2431-2530	95.71"-99.6"	1664	500
2531-2630	99.65"-103.54"	1764	400
2631-2730	103.59"-107.48"	1864	300
2731-2830	107.52"-111.41"	1964	200
2831-2930	111.46"-115.35"	2064	100
2931-3000	115.40"-118"	2164	0

Detail A
Mounting Pattern For Roller Guide

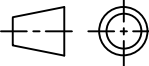


Note:

- * P+Q = Car Weight + Capacity + Compensation
- ** UL certified switch SUNS SND4111-SP-A(L35)
- ** Include 2X wire rope thimble (GB/T5974.1-2006) and 6X clip (GB/T5976-2000) for 10mm dia. rope
- ** Use 10mm pin for connection to meet safety factor request



Copyright - All information contained in this drawing is property of Hyperion Solutions

DRAWING NO: SAF10-Q13		Sheet 1 of 1	
DESCRIPTION: Progressive Safety Gear Q13			
		MATERIALS: ASSEMBLY	Scale: NTS
All Dimensions are in mm [Inches]			
Date	Rev.	ECO #	Des/App
12/9/2020	A	-	NG/
2/11/2021	B	-	JZ/SY
9/30/2021	C	-	JZ/SY
4/10/2024	D	-	MS/WZ

GENERAL TOLERANCES:

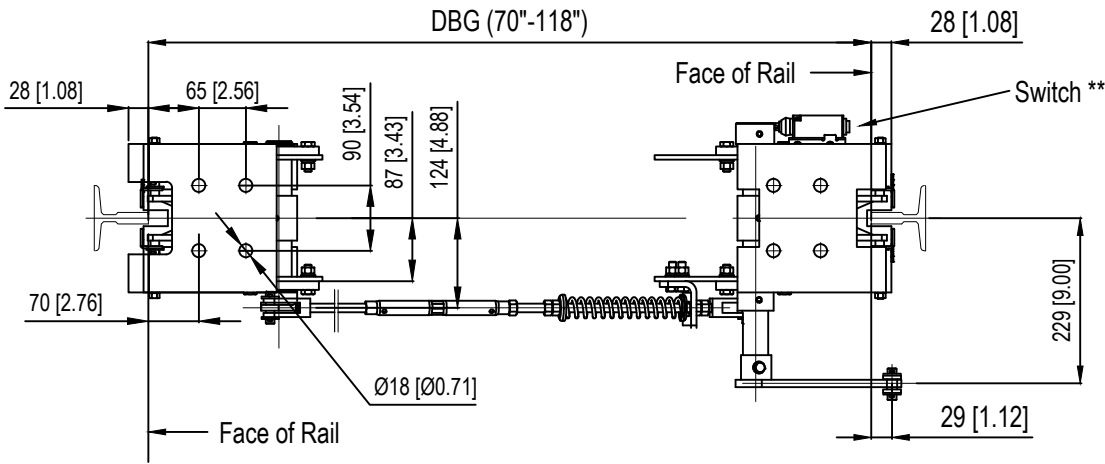
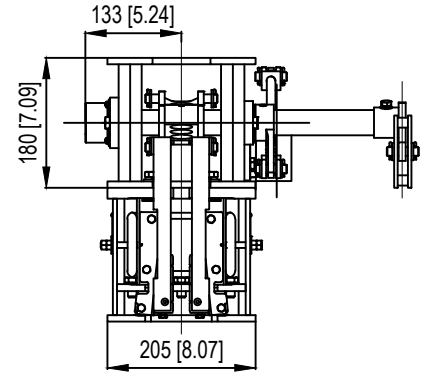
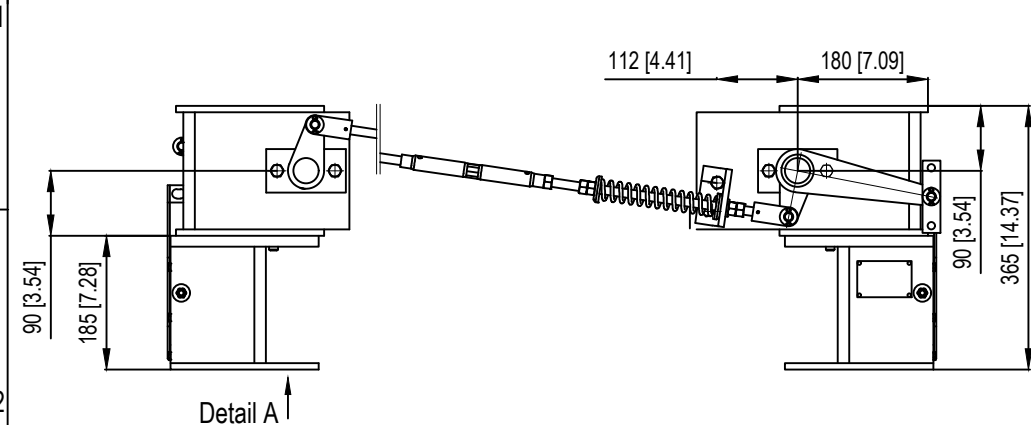
- >6-30mm: ±0.2 [0.008]
- >30-120mm: ±0.3 [0.012]
- >120-400mm: ±0.5 [0.020]
- >400-1000mm: ±0.8 [0.031]
- >1000-2000mm: ±1.2 [0.047]

UNLESS SHOWN OTHERWISE

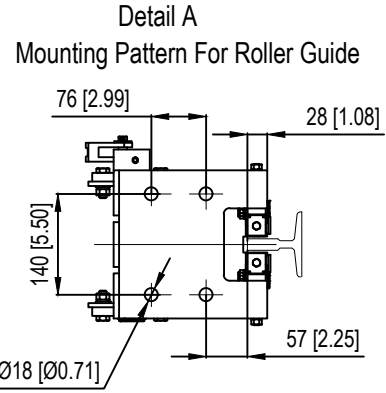


www.hyperion-solutions.com
4949 E. Raines Road #101
Memphis, TN 38118
Phone: 1-877-622-2888
Fax: 901-290-1680

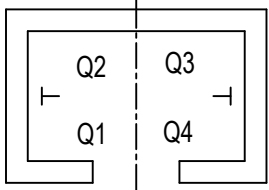
A		B			C		D			E
Part Number	Model	Max Speed (FPM)	Min P+Q* (lb)	Max P+Q* (lb)	Min/Max Activation Force (lbs)	Guide Rail (lbs/ft)	Weight (lbs/set)	Lubricated Rails	Gov. Location	
SAF10-070050-Q24	QJB2500	500	2640	7000	45/337	8#,12#,15#	178	No	Q2, Q4	
SAF10-099050-Q24	QJB2500	500	7000	10692	45/337	8#,12#,15#	178	No	Q2, Q4	



DBG (mm)	DBG (inches)	Pull rod length	Cut off length
1778-1830	70"-72.05"	964	500
1831-1930	72.06"-76"	1064	400
1931-2030	76.01"-79.95"	1164	300
2031-2130	79.96"-83.86"	1264	200
2131-2230	83.9"-87.8"	1364	100
2231-2286	87.83"-90"	1464	0
DBG 90.1"-118"			
2331-2430	91"-95.66"	1564	600
2431-2530	95.71"-99.6"	1664	500
2531-2630	99.65"-103.54"	1764	400
2631-2730	103.59"-107.48"	1864	300
2731-2830	107.52"-111.41"	1964	200
2831-2930	111.46"-115.35"	2064	100
2931-3000	115.40"-118"	2164	0



Note:
 * P+Q = Car Weight + Capacity + Compensation
 ** UL certified switch SUNS SND4111-SP-A(L35)
 ** Include 2X wire rope thimble (GB/T5974.1-2006) and 6X clip (GB/T5976-2000) for 10mm dia. rope
 ** Use 10mm pin for connection to meet safety factor request



Copyright - All information contained in this drawing is property of Hyperion Solutions

DRAWING NO: SAF10-Q24		Sheet 1 of 1	
DESCRIPTION: Progressive Safety Gear Q24			
		MATERIALS: ASSEMBLY	Scale: NTS
All Dimensions are in mm [Inches]			
Date	Rev.	ECO #	Des/App
12/9/2020	A	-	NG/
2/11/2021	B	-	JZ/SY
9/30/2021	C	-	JZ/SY
4/10/2024	D	-	MS/WZ

GENERAL TOLERANCES:
 >6-30mm: ±0.2 [0.008]
 >30-120mm: ±0.3 [0.012]
 >120-400mm: ±0.5 [0.020]
 >400-1000mm: ±0.8 [0.031]
 >1000-2000mm: ±1.2 [0.047]
 UNLESS SHOWN OTHERWISE

HYPERION
www.hyperion-solutions.com
 4949 E. Raines Road #101
 Memphis, TN 38118
 Phone: 1-877-622-2888
 Fax: 901-290-1680