

TORINDRIVE

NORTH AMERICA

A Brand of HYPERION

Questions? Call 901-730-5480 or
Email torindrive@hyperion-solutions.com

Traction Machine Survey				
Project Name				
Contract Number				
Seismic Provisions Required? (Yes, No)				
Project Address				
Consultant				
SECTION #1 - For Bidding				
Car ID Numbers				
Required	Geared or Gearless			
	Machine Location (MRL, Overhead, for basement refer to basement survey)			
	Roping Ratio (1:1, 2:1)			
	Elevator Capacity (lbs)			
	Elevator Speed (fpm)			
	Travel (ft) (If not available, 12' per floor can be assumed)			
	Machine Shape (MRL Only) (Pancake, Sausage)			
Existing Rope Diameter Size (8mm, 10mm, 1/2", 5/8", 3/4")				
Will New Rope Diameter Need to Match Existing? (Yes, No)				
Drive Output Voltage (208-230V, 460-480V)				
Drive Manufacturer (KEB/Green, Yaskawa/Magnetek, Schindler, KONE, TKE, Otis, Other)				
Encoder Cable Length (30', 50' for geared) (10m, 20m, 37m, 50m, 60m for gearless)				
System Options (leave blank if no preference)				
Empty Car Weight (lbs) (Will assume 1.5x capacity if blank)				
Preferred Counterweight (%) (range: 40-50)				
Emergency Brake Option (Check One, list preferred HW model if selected)	TDNA Standard (Default)			
	HW Rope Gripper (620, 622, 624, 626, etc.)			
Existing Compensation Density (if re-using)				
Weight of Existing Compensation Sheave (lbs)				
Double Wrap Roping Required? (Yes, No)				
Specified Acceleration Rate (ft/s ²)				
Items to Quote: (Check All Required)	Machine			
	Bedplate			
	Rope Guard			
	Deflector			
	Encoder Cable			

TORINDRIVE

NORTH AMERICA

A Brand of HYPERION

Questions? Call 901-730-5480 or
Email torindrive@hyperion-solutions.com

SECTION #2 - For Drawings				
2-Week Lead Time Option Preferred? (if Available) (Yes, No)				
Estimated Project Start Date				
Car ID Numbers				
Right or Left Hand Machine? (p.4 - III. 1)				
On-Site Reassembly Service (Only Available for Large Gearless TGL Machines)				
Rope Drop Distance (in) (p.4 - III. 2)				
Rope to Machine Room Wall (in) (p.4 - III. 2)				
Machine Room Height Clearance (in) (p.4 - III. 2)				
Existing Machine Beam Location (p.4 - III. 3)				
CT - Concrete Slab Thickness (in) (p.4 - III. 3)				
Wf - Beam Width (in) (p.4 - III. 3)				
Ww - Beam Height (in) (p.4 - III. 3)				
Z1 (in) (p.4 - III. 2)				
Z2 (in) (p.4 - III. 2)				
Special Bedplate Configurations				
Prefer Deflector Mounted Below Slab (Yes, No)				
Keep Existing Deflector or Replace with New?				
If retaining Deflector:				
Ddef - Deflector Sheave Diameter (in) (p.4 - III. 3)				
Number of Existing Deflector Grooves				
Groove Pitch (Center of rope to rope) (in)				
Ys - Bottom of Slab to Deflector Centerline (in) (p.4 - III. 3)				
Rope Drop Square to the Wall (p.5 - III. 4) (Yes, No)				
Angle Profile (p.5 - III. 4)				
X1 - Car Rope to Wall (in) (p.5 - III. 4)				
X2 - Car Rope to Wall (Perpendicular) (in) (p.5 - III. 4)				
X3 - Car Rope to Wall 2 (Perpendicular) (in) (p.5 - III. 4)				
Prefer Pre-Drilled Holes or Pilot Holes for Bedplate?				
Please include machine room / existing equipment pictures for reference. Please include additional measurements to any possible obstructions not covered in survey (Hitchplates, Governors, Air Ducts, etc..) Pictures can be emailed to: torindrive@hyperion-solutions.com				

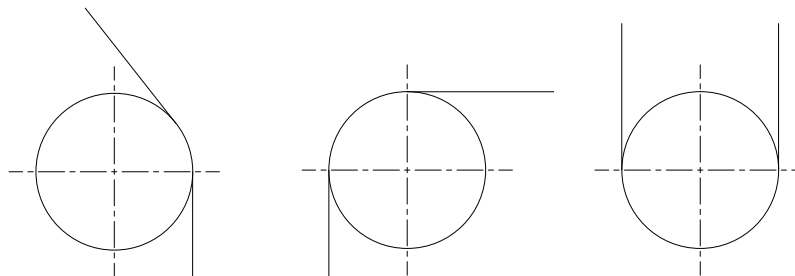
TORINDRIVE

NORTH AMERICA

A Brand of **HYPERION**

Questions? Call 901-730-5480 or
Email torindrive@hyperion-solutions.com

Overhead / Deflector / Compounding Sheave					
Location					
Sheave Type					
Quantity					
Sheave Diameter, D					
Max Allowable Width, W (in)					
Required Shaft Diameter, d (in) (if any)					
Shaft Type					
L1					
L2					
L3					
L4					
L5					
L6					



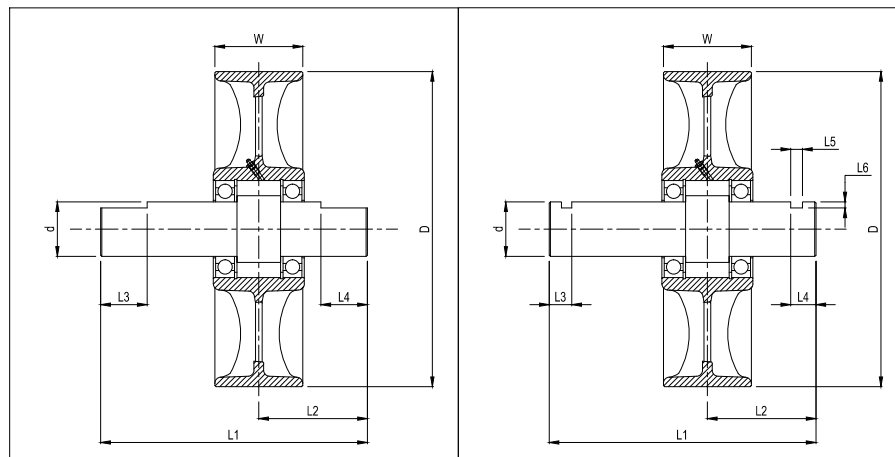
A
Deflector (<90° Wrap)

B
90° Wrap

C
180° Wrap

Shaft Type A

Shaft Type B



TORINDRIVE

NORTH AMERICA

A Brand of **HYPERION**

Questions? Call 901-730-5480 or
Email torindrive@hyperion-solutions.com

Illustration 1.

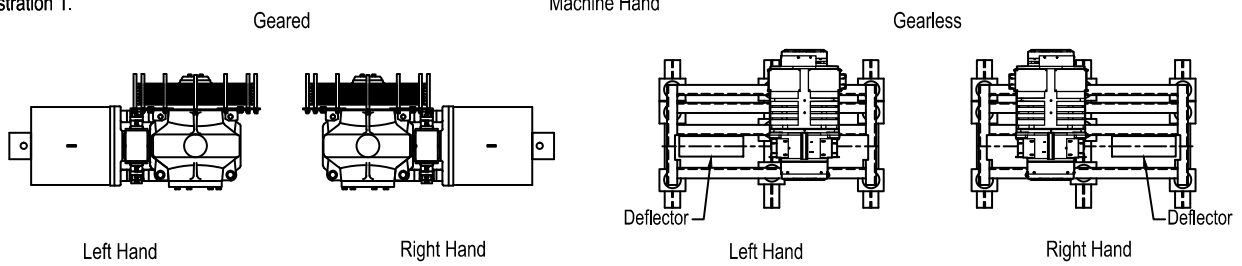


Illustration 2.

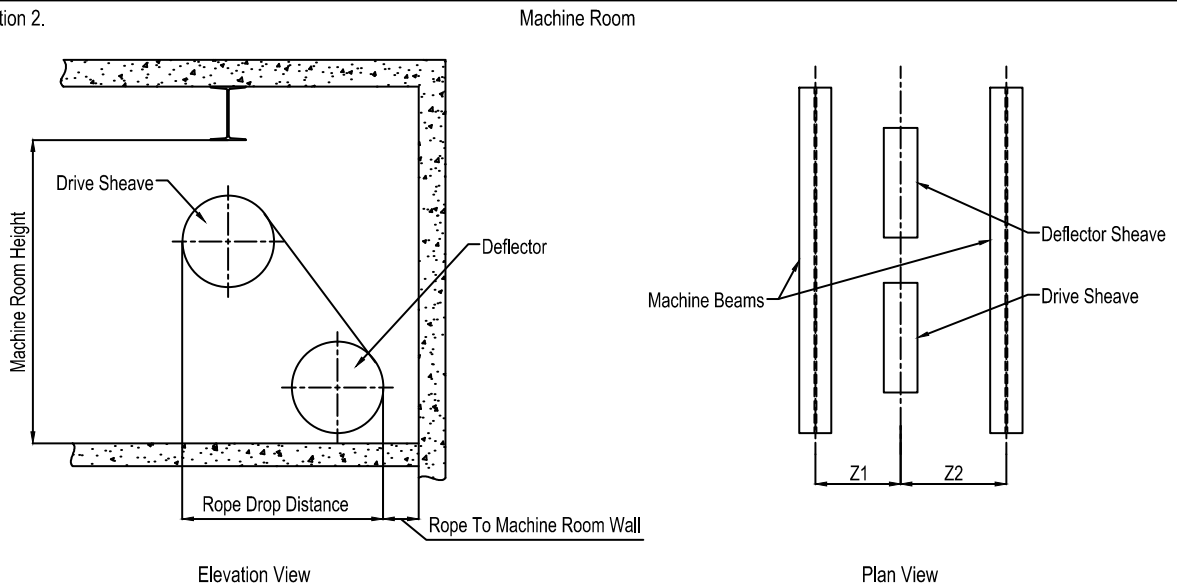
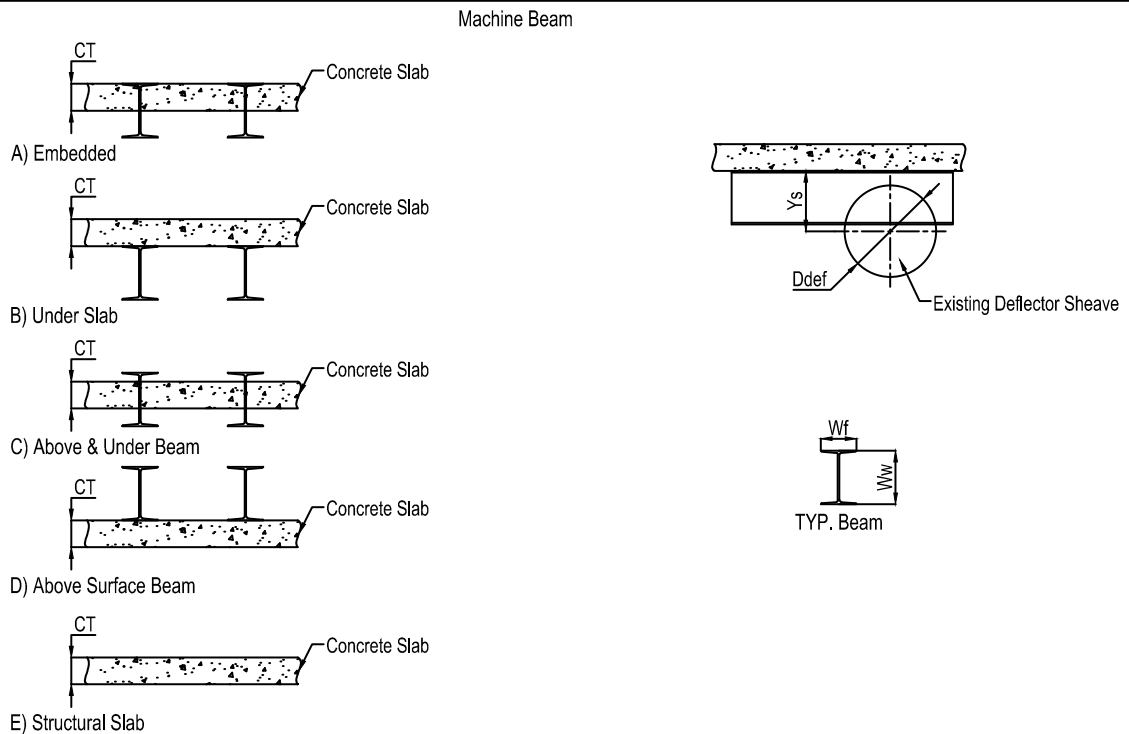


Illustration 3.



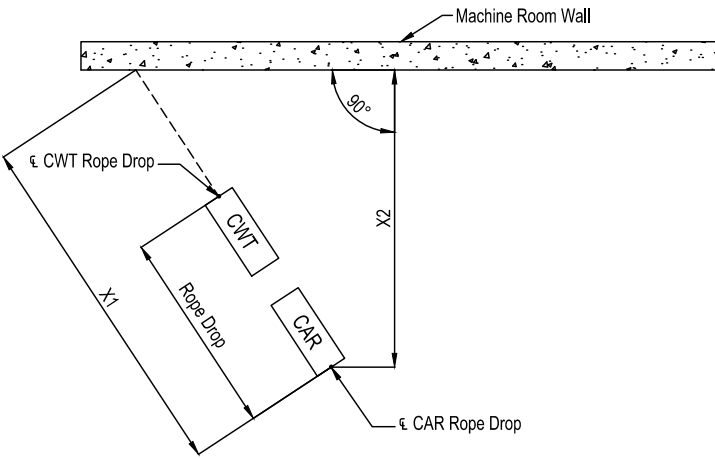
TORINDRIVE

NORTH AMERICA

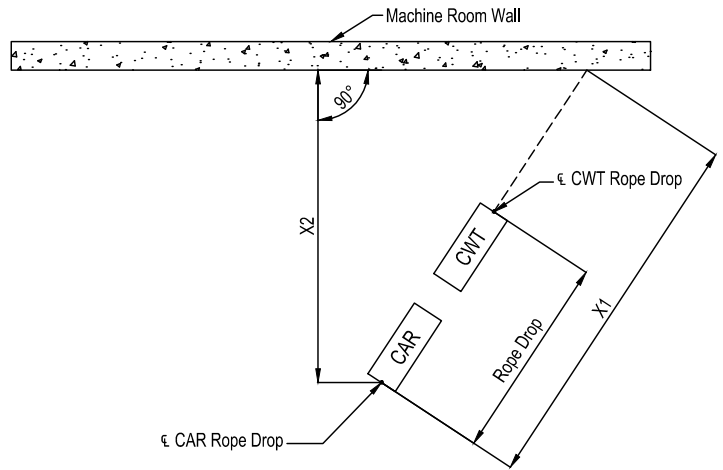
A Brand of HYPERION

Questions? Call 901-730-5480 or
Email torindrive@hyperion-solutions.com

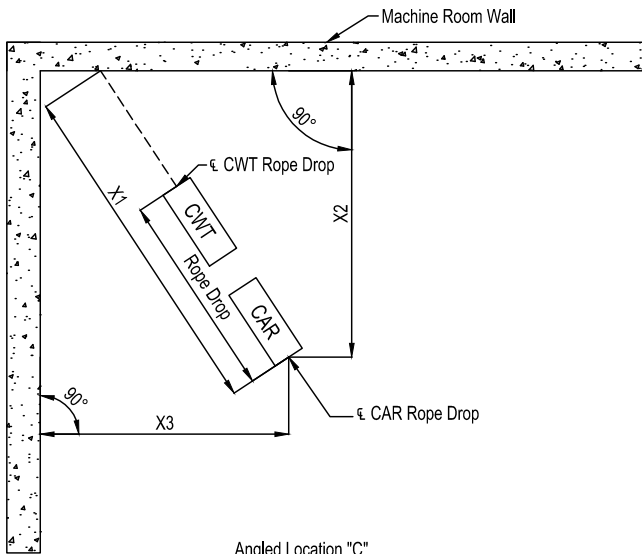
Illustration 4.



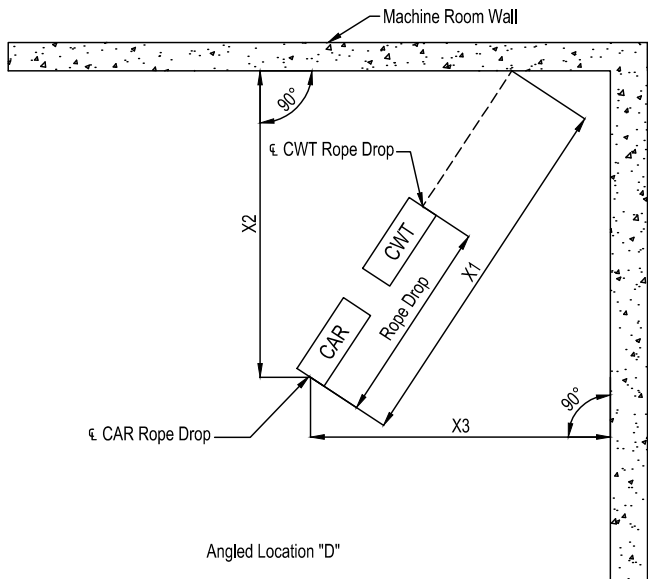
Angled Location "A"



Angled Location "B"



Angled Location "C"



Angled Location "D"

TORINDRIVE

NORTH AMERICA

A Brand of HYPERION

